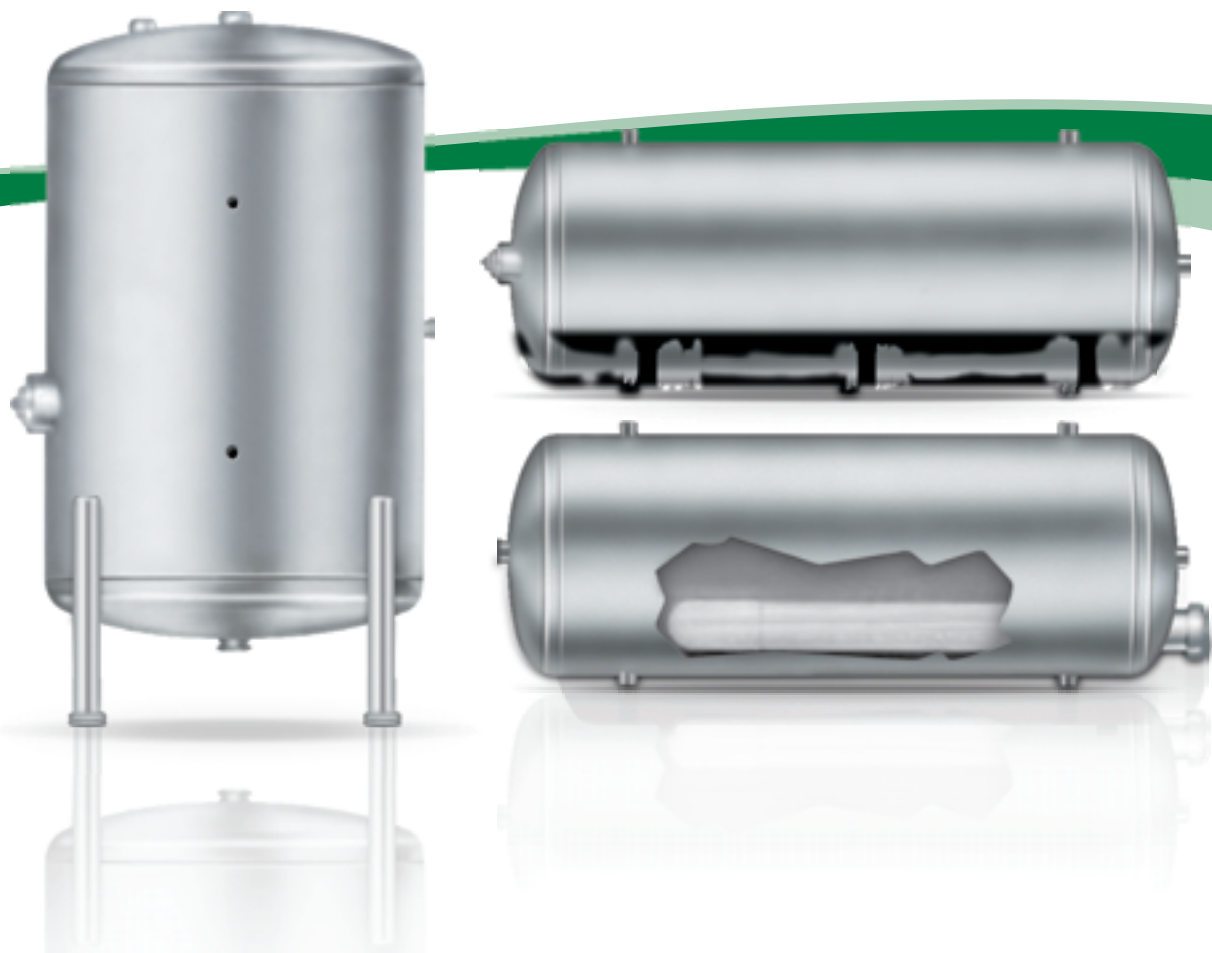


Custom-Line Commercial Heavy-Duty Large Volume Storage Tanks

HD 20-80 to HD 96-12,500

Storage Capacity
300 Litres to 47,000 Litres

**Available with Glass,
Cement & Epoxy Lining**



Large volume tanks are designed for storing potable water. Fitting locations of these custom-line tanks match the needs of normal installations

FEATURES

**SIZES FROM
300 Litres to
47,375 Litres**

ASME Code steel tanks are constructed of Code material.

ASME CODE CONSTRUCTION

All tanks are constructed to the requirements of the ASME Code. These ASME Code tanks are available at 8.6 bar, 10.3 bar & 11 bar working pressure. Consult factory for ASME code tanks are with greater or lesser working pressures with special configurations, materials and pressures.

LINING AND COATINGS

Each lining and coating has particular capabilities and limitations. Please consult the factory for recommendations on the uses of linings for specific applications. Lined tanks receive one prime coat of paint on external surface. Thorough investigation on the service life of steel tanks with protective coatings or linings has led to the recommendation of the following linings:

- **Glass-lined** All internal surfaces exposed to water are glass-lined per ASME HLW code procedures.
- **Cement Lined** Cement lining consists of a careful hand application of a specially formulated cement over the interior of the vessel. This lining adds a great deal of weight to the tank; however, with proper application very little tank corrosion occurs over a long life.
- **Epoxy Lined** The application of specially formulated epoxy makes this lining suitable for cold or hot water storage.

Contact your local A.O. Smith representative for severe or unusual applications that may require other materials.

CATHODIC PROTECTION

Glass-lined, cement and epoxy tanks are furnished with anodes designed for maximum protection.

All tanks will be supplied with the fittings located as indicated on the drawings unless specified otherwise.

INSPECTION OPENINGS

- **Glass-lined** Manhole 280 mm x 380 mm and handhole openings are available as optional feature.
- **Cement Lined** One 280 mm x 380 mm manhole standard equipment on 762 mm diameter and larger
- **Epoxy Lined** One 280 mm x 380 mm manhole standard equipment on 762 mm diameter and larger.

TANK OPTIONS

- Manholes
- Handholes
- Additional/ Custom Tank Openings
- Lifting Lugs
- Angle Legs
- Ring Base
- Horizontal Tank Saddles
- Factory Jacketing and Insulation
- Tank Heaters

STORAGE TANK SELECTION

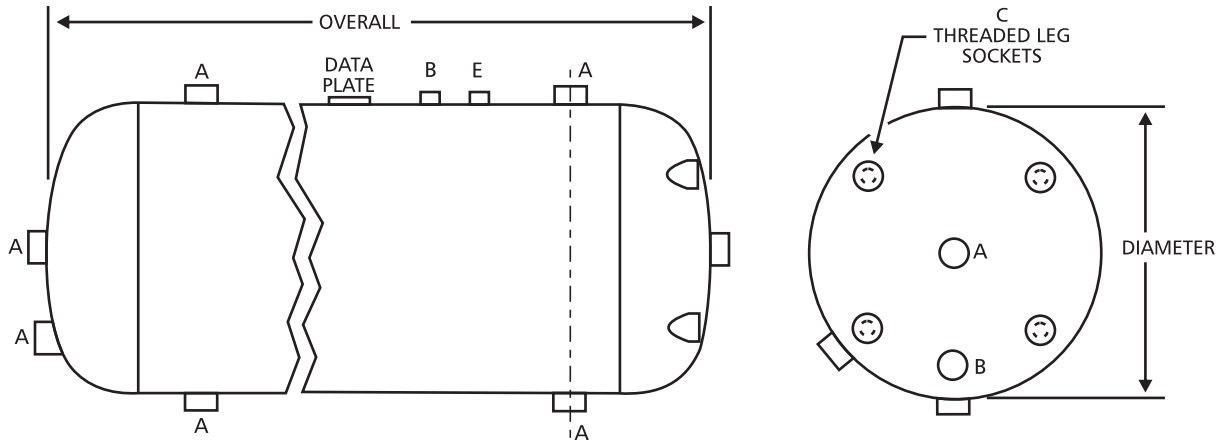
Model Number	Diameter [mm]	Nominal Approximate O.A. Length [mm]	Litres Capacity	Model Number	Diameter [mm]	Nominal Approximate O.A. Length [mm]	Litres Capacity
HD20-80	500	1,524	303	HD54-650	1,372	1,803	2,464
HD20-100	500	1,829	379	HD54-750	1,372	2,057	2,843
				HD54-900	1,372	2,413	3,411
HD24-125	610	1,676	474	HD54-1,000	1,372	2,667	3,790
HD24-140	610	1,905	569	*HD54-1,250	1,372	3,277	4,738
*HD24-175	610	2,286	663	*HD54-1,500	1,372	3,886	5,685
				*HD54-1,800	1,372	4,597	6,822
HD30-175	762	1,524	663				
HD30-200	762	1,803	758	*HD60-800	1,524	1,829	3,032
HD30-250	762	2,134	948	*HD60-1,000	1,524	2,235	3,790
*HD30-300	762	2,515	1,137	*HD60-1,250	1,524	2,718	4,738
				*HD60-1,500	1,524	3,200	5,685
HD36-250	914	1,524	948	*HD60-1,750	1,524	3,708	6,633
HD36-300	914	1,803	1,137	*HD60-2,000	1,524	4,191	7,580
HD36-350	914	2,184	1,327				
HD36-400	914	2,362	1,516	HD66-1,000	1,676	1,905	3,790
*HD36-500	914	3,099	1,895	*HD66-1,500	1,676	2,718	5,685
				*HD66-2,000	1,676	3,531	7,580
HD42-375	1,067	1,702	1,421	*HD66-2,500	1,676	4,343	9,475
HD42-450	1,067	2,007	1,706				
HD42-500	1,067	2,235	1,895	*HD72-2,500	1,829	3,734	9,475
HD42-600	1,067	2,616	2,274	*HD72-3,000	1,829	4,420	11,370
HD42-700	1,067	3,023	2,653	*HD72-3,500	1,829	5,105	13,265
*HD42-800	1,067	3,404	3,032	*HD72-4,000	1,829	5,791	15,160
HD48-500	1,219	1,854	1,895	*HD84-4,000	2,134	4,394	15,160
HD48-600	1,219	2,057	2,274	*HD84-5,000	2,134	5,385	18,950
HD48-700	1,219	2,362	2,653	*HD84-6,000	2,134	6,401	22,740
HD48-750	1,219	2,667	2,843	*HD84-8,000	2,134	8,382	30,320
HD48-900	1,219	2,972	3,411				
HD48-1,000	1,219	3,480	3,790	*HD96-7,500	2,438	6,198	28,425
*HD48-1,250	1,219	4,039	4,738	*HD96-10,000	2,438	8,103	37,900

NOTE: Above listed tanks are standard sizes only. Other capacity tanks are available. Custom tanks built to your specifications are also available.

Consult factory representative.

*Vertical installation requires addition of angle iron legs or ring base.

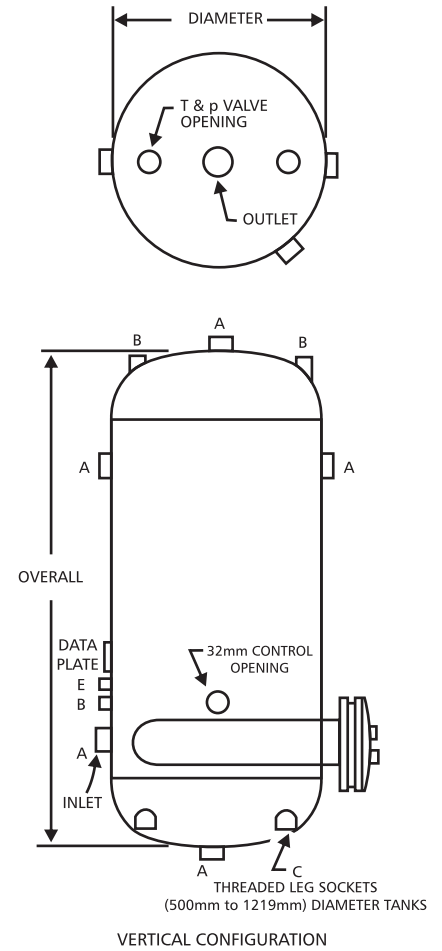
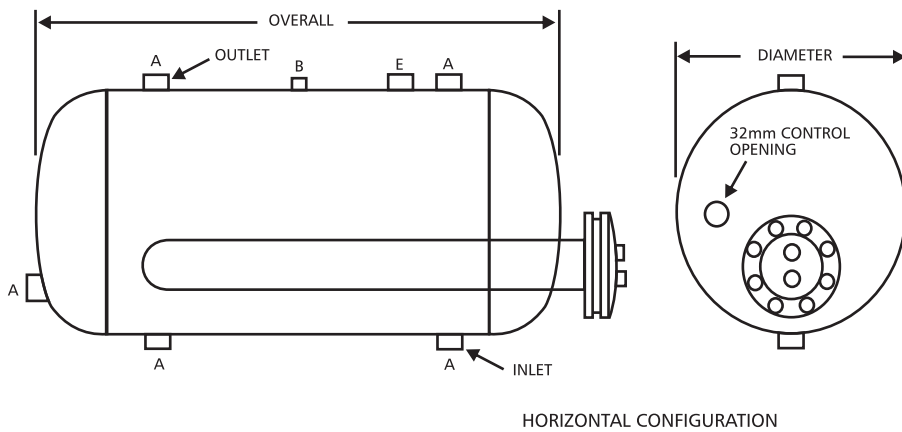
CUSTOM-LINE STORAGE TANKS (500mm to 2438mm DIA. TANKS)



NOTE

- 1) IT IS RECOMMENDED THAT 1372mm DIAMETER AND LARGER TANKS BE ORDERED WITH ANGLE LEGS RATHER THAN THREADED LEG SOCKETS FOR VERTICAL INSTALLATIONS.
- 2) SPECIFY FOR HORIZONTAL OR VERTICAL INSTALLATION.
- 3) NO LEG SOCKETS PROVIDED ON HORIZONTAL TANKS.

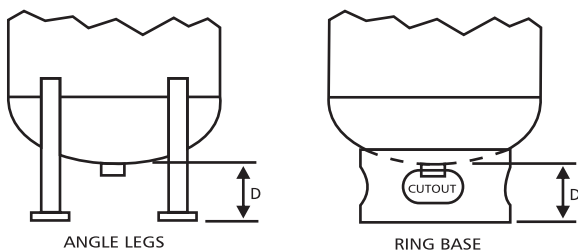
CUSTOM-LINE STORAGE TANKS WITH HEATING COILS



NOTE

- 1) ADD SUFFIX "ES" FOR SINGLE-WALL OR "ED" FOR DOUBLE WALL TO MODEL NUMBER WHEN EQUIPPED WITH A TUBE TANK HEATER (i.e.: HD-36-350ES).
- 2) SPECIFY FOR HORIZONTAL OR VERTICAL INSTALLATION.
- 3) NO LEG SOCKETS PROVIDED ON HORIZONTAL TANKS.

OPTIONAL VESSEL SUPPORT CONSTRUCTION



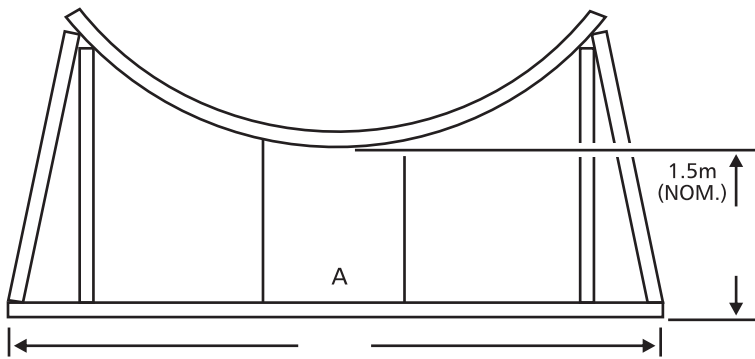
All dimensions in mm

DIMENSION CHART					
Tank Diameter	A mm	B mm	C mm	D mm	E mm
500	51	19	38	152	19
610 to 914	64	19	64	203	25
1067 and 1219	76	19	76	254	25
1372 to 2438	76	19	76	254	25

TANK SADDLES

A.O Smith Part no.	Tank DIA. mm	A mm	B mm
P2-2600-20	500	559	152
P2-2600-24	610	660	152
P2-2600-30	762	813	152
P2-2600-36	914	965	152
P2-2600-42	1,067	1,118	152
P2-2600-48	1,219	1,270	152
P2-2600-54	1,372	1,422	203
P2-2600-60	1,524	1,575	203
P2-2600-66	1,676	1,727	203
P2-2600-72	1,829	1,880	254
P2-2600-84	2,134	2,184	254
P2-2600-96	2,438	2,489	254

All dimensions in mm



SAMPLE SPECIFICATION FOR CUSTOM-LINE STORAGE TANKS

ASME storage tank to be A.O. Smith Custom-Line model _____. Capacity to be _____ litres with a diameter of _____ mm. Tank(s) shall be constructed and stamped according to ASME specifications for _____ bar working pressure. Manhole (280mm x 380mm), handhole (100mm x 150mm) or inspection openings [2] 50mm shall be installed in accordance with ASME Code requirements and manufacturer(s) standard practice. Tank to be constructed of (carbon steel) _____. Lining shall be (glass, epoxy, cement) _____. Tank(s) lined with (glass, cement, epoxy) _____ lining shall be equipped with the number and size of magnesium anode rod(s) sufficient to provide adequate protection for the tank lining. Tank shall be (vertical, horizontal) _____ design and provided with (four) _____ (angle iron legs, threaded leg socket(s) _____ ring base, _____ saddles.

SAMPLE SPECIFICATION FOR TANK HEATERS

Tank heaters shall be Model No. _____ 20mm OD 20 gauge copper "U" tubes. Heater to have _____ square feet of heating surface to heat _____ litres per hour from _____ deg °C to _____ deg °C with heating media of _____ bar steam (or _____ deg °C boiler water). The element shall be constructed so that the entire section can be removed from the tank for cleaning and inspection.

A. O. Smith India Water Heating Private Limited

No. 3, 6th Main Road, 4th Block, Jayanagar, Bengaluru - 560 011.

T: +91.80.4255.6000 ■ F: +91.80.4255.6025 ■ Toll Free: 1.800.103.2468

■ www.aosmithindia.com

